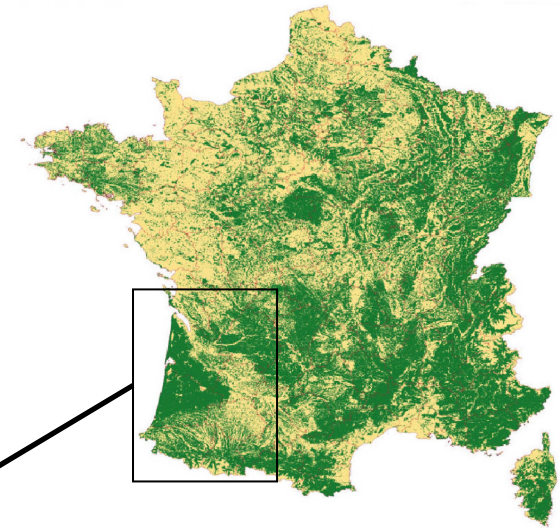
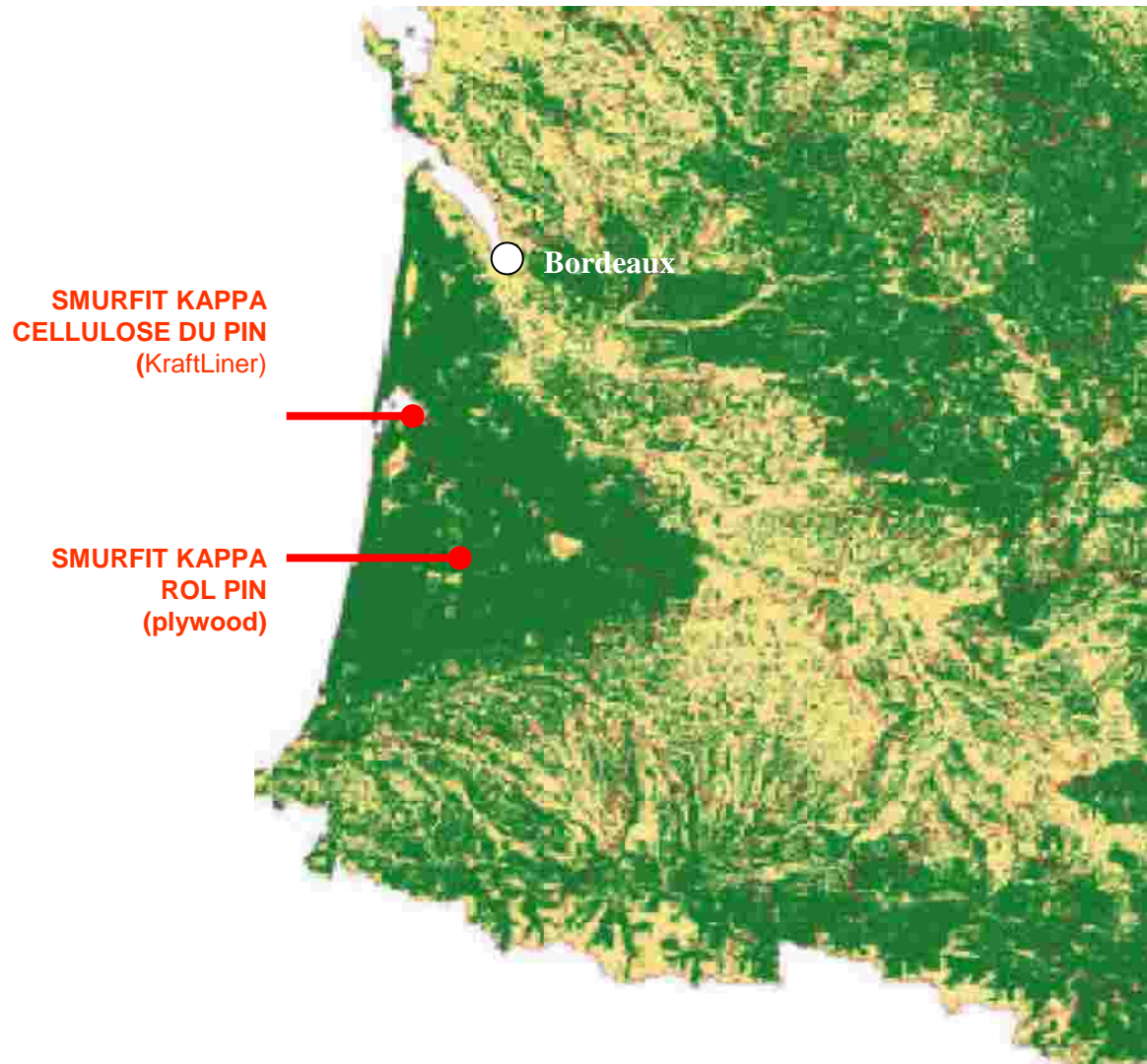


# THE AQUITAINE FOREST



## THE LANDES FOREST

- 900,000 hectares of maritime pines.
- Annual growth : 10 m<sup>3</sup> / hectare.
- A homogeneous, single species forest.
- Resource used for : timber, veneers, parquet-flooring, panelling, pulp and paper, chipboard.

# THE AQUITAINE FOREST

- A « cultivated » forest.
- A forest for timber production.
- A forest of private owners (90 %) with an exemplary dynamism in silviculture.
- By genetic improvement, productivity is increasing from 10 m<sup>3</sup> / hectare / year to 16 m<sup>3</sup> / hectare / year.
- A divided forest, but a good accessibility and a flat land apt to be mechanized.
- No threat of limitation of harvesting by ecomovement, but we must remain vigilant.
- 0.9 million of hectares concentrated around the mill.

# SILVICULTURE IN THE LANDES FOREST

**Final cut**  
**35 to 60 years**

**Land preparation  
and planting**

**Plantation  
maintenance**

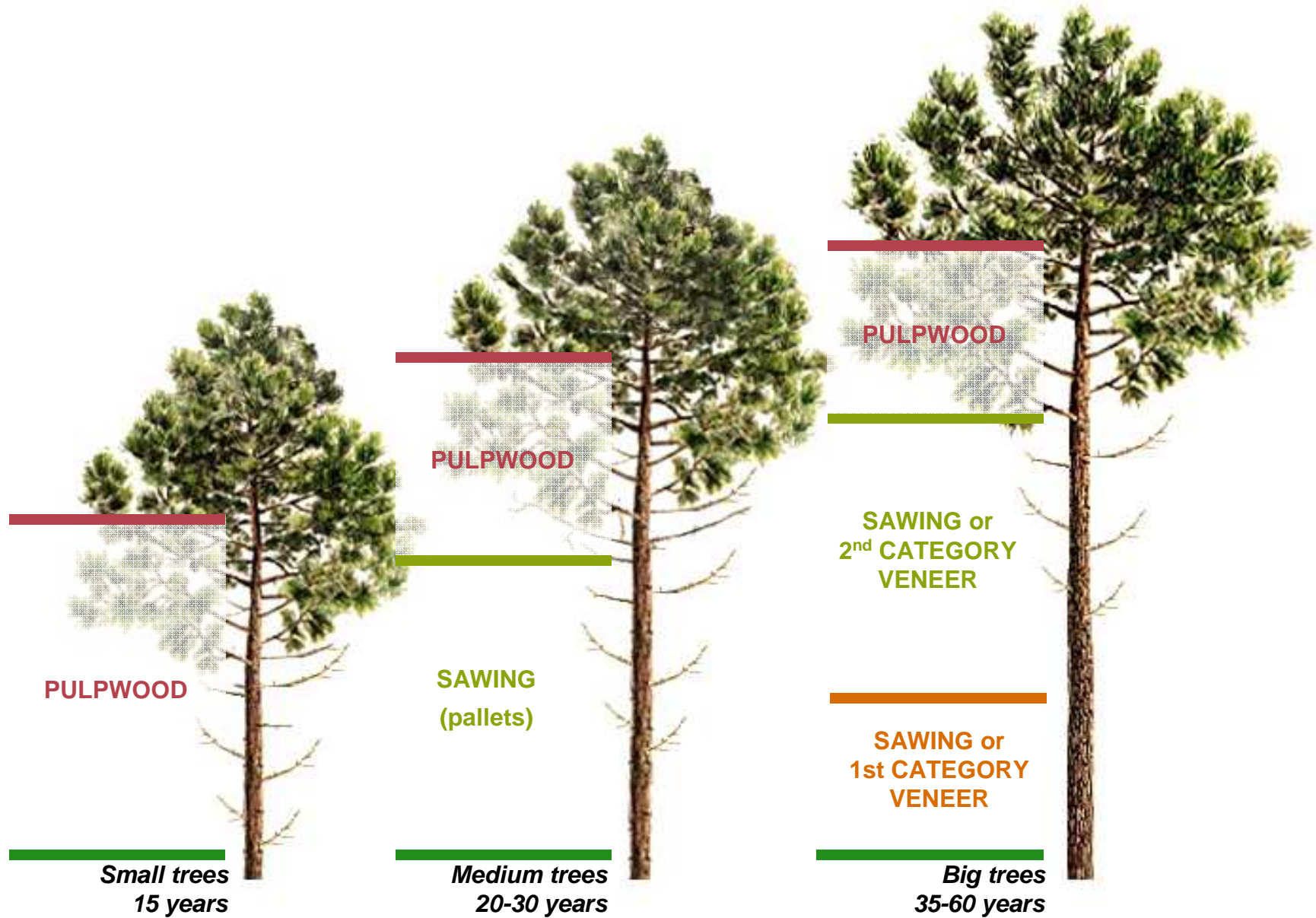
**Third to  
fifth clearing  
from 22 years**



**Second clearing** **Pruning**  
**17 to 19 years**

**First clearing**  
**11 to 12 years**

# PRODUCTS FROM THE LAND FOREST TREES



# FORESTRY SYSTEM IN AQUITAINE

